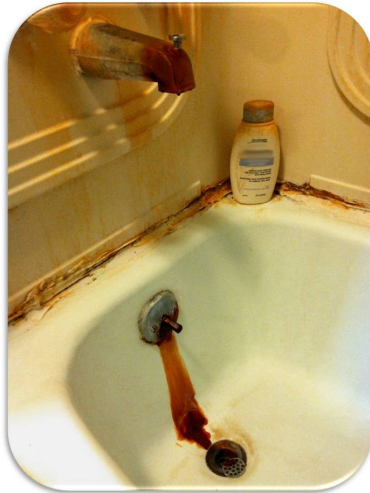
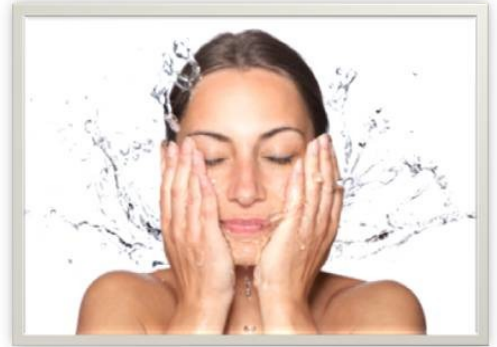




- Reduces stains
- Eliminates odors
- Brighter laundry
- Protects plumbing

OXY2E Series

Iron Reduction System
With Electronic Timer



- **No Chemicals.** A chemical regenerant is not required.
- **No In-Line Venturi to Plug or Adjust.**
- **No Air Compressor.** The noise and expense of compressors are eliminated.
- **No Air Release Valve Required.**

- **Small Footprint.** Small footprint allows for ease of installation.
- **Rugged Mechanical Piston Valve.** No solenoids or flapper valves to stick.
- **Full Flow Bypass Valve.** Simple to use valve allows you to bypass the unit for lawn sprinkling or during filter maintenance.
- **Automatic pH Adjustment.** Specialty filter media automatically adjusts pH for iron & manganese reduction.



Model Number	Media cu. ft.	Backwash Rate Required @ 40 psi	Service Flow Rate (gpm)		Overall Dimensions			Pipe Size
			Peak	Cont.	L	W	H	
OXY2E-10	1.0	5 GPM	9	3	12"	15"	64"	1"
OXY2E-20	2.0	7 GPM	13	5	13"	15"	64"	
OXY2E-10M	1.0	5 GPM	9	3	12"	15"	64"	
OXY2E-20M	2.0	7 GPM	13	5	13"	15"	64"	

NOTE: Residential OXY2E Filter Systems are not designed for continuous flow applications. (Example: Ground water heat pumps, lawn irrigation, etc.) Specifications subject to change without notice. "M" suffix is used for manganese reduction.

