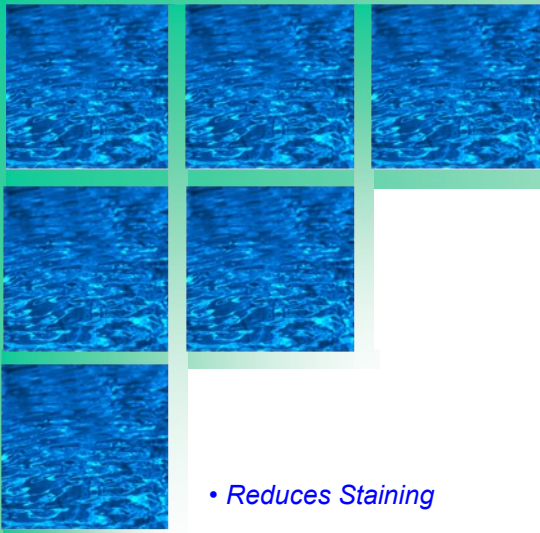


Sterling

Hardness/Iron Reduction
And Disinfector

Disinfector Series

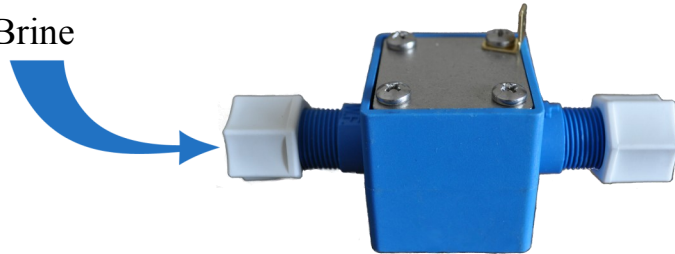


- *Reduces Staining*
- *Sparkling Dishes*
- *Bottom Line Savings*
- *Brighter Laundry*
- *Protects Plumbing*

- **Automatic Chlorine Generator.** Disinfects the unit and reduces iron and sulfur bacteria each regeneration.
- **Two Units in One.** Removes iron and hardness. Zeolite provides excellent filtration and removes iron and hardness through ion exchange.
- **Fully Adjustable Control.** Programming can be set to handle your exact water conditions.
- **Non-Corrosive Construction.** All components are made of fiberglass, stainless steel, or similar materials to provide many years of service.
- **Rugged Mechanical Piston Valve.** No solenoids or flapper valves to stick.
- **Full Flow Bypass Valve.** Simple to use valve allows you to bypass the unit for lawn sprinkling or during filter maintenance.



Brine



Brine and Chlorine

Model Number	Grain Capacity		Type of Regeneration	Service Flow Rate		Dimensions*		
	Min.	Max.		Peak	Cont.	W	H	D
Z30	18,000	30,000	Meter/Time Clock	8	3	10	64	16
Z45	27,000	45,000	Meter/Time Clock	12	4	12	58	16
Z60	36,000	60,000	Meter/Time Clock	14	5	13	64	16

*NOTE: Dimensions do NOT include 18" brine tank.

STERLING

WATER TREATMENT

www.sterlingwatertreatment.com

